

OPEN WIDIE

FOLLOW FRANCIS. FOLLOW JESUS.

EMBRACE | ENABLE | ENCIRCLE



The
FEAST

A Catholic Prayer Meeting of the Light of Jesus Family



ENCIRCLE

talk three

THE FEAST DECLARATION OF ABUNDANCE

Today, I receive all
of God's love for me.

Today, I open myself to the
unbounded, limitless, overflowing
abundance of God's universe.

THE FEAST DECLARATION OF ABUNDANCE

Today, I open myself
to God's blessings, healing,
and miracles.


Today, I open myself
to God's Word so that I become
more like Jesus every day.

THE FEAST DECLARATION OF ABUNDANCE

Today, I proclaim that
I am God's Beloved,
I am God's Servant,
I am God's Powerful Champion.
And because I am blessed,
I am blessing the world.
In Jesus' Name, Amen.







The LORD will comfort
Israel again
and have pity on her ruins.
Her desert will blossom
like Eden, her barren wilderness
like the garden of the LORD.

Isaiah 51:3

A person's hands are shown holding a miniature model of a house. The house is white with a dark roof and several windows. The person is wearing a light-colored shirt. The background is blurred, showing what appears to be a bookshelf. Overlaid on the image in large, white, serif capital letters is the text "LOVE YOUR HOME".

LOVE
YOUR
HOME



God wants you
to care for
Creation.



A photograph of two people holding hands, with a body of water and a sunset in the background. The person on the left is wearing a plaid shirt, and the person on the right is wearing a floral dress. The text is overlaid in the center of the image.

If you're a loving person,
you will love everyone
and everything.



Francesco

LAUDATO SI'

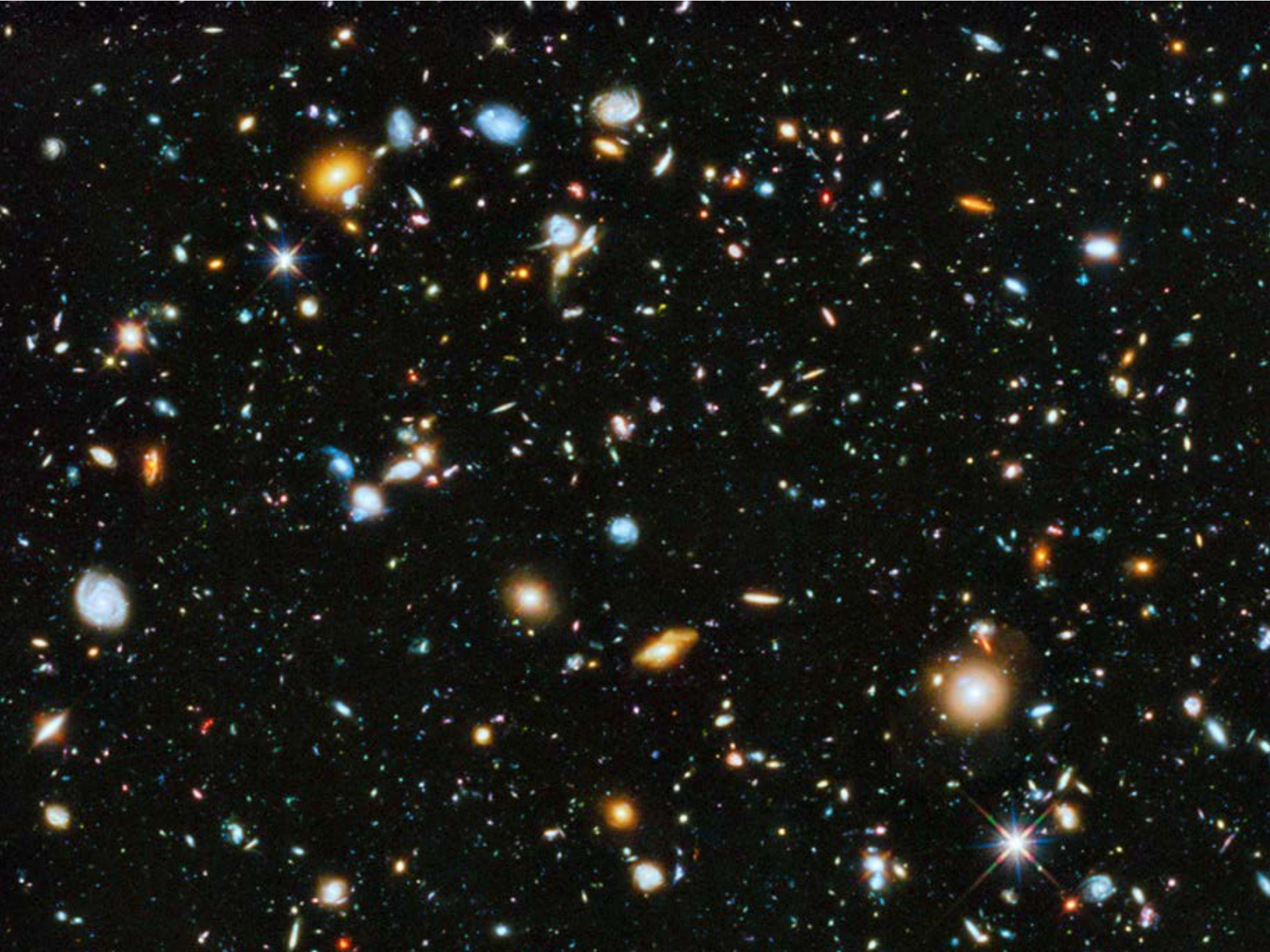
Lettera Enciclica
sulla cura della casa comune



Libreria Editrice Vaticana

If you love God,
you'll care
for this planet.







Milky Way
=
100 Billion Stars

Universe

=

100 Billion Galaxies


A long-exposure photograph of a night sky showing star trails. The stars have moved in circular patterns around a central point, creating a sense of rotation. The trails are most prominent in the upper half of the frame. In the lower half, the dark silhouette of a mountain range is visible against the lighter sky. The overall color palette is dark, with shades of purple, blue, and black.

INFINITE UNIVERSES



MULTIVERSE!





Then the Lord God
placed the man
in the Garden of Eden
to cultivate it
and guard it.

Genesis 2:15




1. Cultivate

A Swiss Guard in historical uniform stands in the center of a stone archway. The archway is flanked by two small white guardhouses with grey roofs. The background shows a cobblestone path leading through the archway. The text "2. Guard" is overlaid in white serif font across the center of the image.


2. Guard

A large, white iceberg with a jagged peak is melting in the ocean. The water is dark blue, and the sky is a pale, hazy blue. In the background, other icebergs and a snow-capped mountain peak are visible. The foreground is filled with numerous small, white icebergs floating in the water.

GLOBAL WARMING




Creation
is
a
mirror.



If you destroy
creation,
it will destroy
you.

A traditional wooden house with a thatched roof and a corrugated metal roof, situated in a flooded area with trees in the background. The house is built on stilts and has a wooden staircase leading up to the entrance. The water is calm, reflecting the house and the surrounding greenery. The text is overlaid in a white serif font.

Three *Big* Reasons
to
Love Your Home



1

Because
You Love
The Poor



When creation fights back,
who suffers the most?



answer

THE POOR

A close-up photograph of a baby's face, smiling broadly. The baby has dark hair and is wearing a light-colored, possibly white, long-sleeved shirt. The background is slightly out of focus, showing a wooden door or paneling and a white wall with a light switch. The overall lighting is soft and indoor.

2

Because

You Love

Your Children

A man with glasses and a white shirt is smiling and holding a baby. The baby is wearing a white graduation gown and a black mortarboard cap with a tassel. The background is a bright, indoor setting with a bookshelf and a potted plant.

*You never own your home—
you only keep it
for the next generation.*

A large, light-colored stone or concrete statue of Jesus Christ, standing with his arms outstretched horizontally. He has long hair and a beard, and is wearing a robe. The background is a cloudy, overcast sky. The entire image has a semi-transparent dark grey overlay.

3

Because
You Love
God

How to Love

Your Home



The image is a dark, monochromatic collage. It features several overlapping scenes: a hand holding a large pile of nails, a hand using a hammer on a nail, and a hand operating a nail gun. The text "Everything affects everything." is written in a white, serif font across the center of the collage. The background is a mix of these scenes, creating a sense of interconnectedness and craftsmanship.

Everything
affects
everything.



1

Plant One Tree a Year

The image shows three recycling bins on a wooden surface. The left bin is blue and contains crumpled white paper. The middle bin is tan and contains clear plastic bottles. The right bin is green and contains broken glass pieces. A large white number '2' is centered at the top, and a white horizontal line is positioned below it. The text 'Recycle What You Can' is written in white across the middle of the image.

2

Recycle What You Can

3

Change Your Lightbulbs
to LED

4

Avoid Plastic Bags



5

Use Rechargeable Batteries

A woman with long blonde hair is brushing her teeth in a bathroom. She is looking upwards and to the right. The background is slightly blurred, showing a white towel hanging on a rack and a white sink. The overall image has a soft, muted color palette.

6

Brush Without
Running Water

A close-up photograph of a hand flipping a light switch. The hand is in the foreground, and the switch is mounted on a wall. The background is slightly blurred, showing other switches and a wall outlet. The overall tone is muted and professional.

7

Turn Off
Lights and Computers



8

Rethink Water Bottles

A black and white photograph of a metal bolt with several padlocks attached to it. The bolt is the central focus, with a large, rounded nut at the top and a smaller nut at the bottom. Several padlocks of different colors and sizes are attached to the bolt. The background is a blurred stone structure, possibly a bridge or a wall. The text "You never love in vain." is overlaid on the image in a white, serif font.

You
never love
in vain.